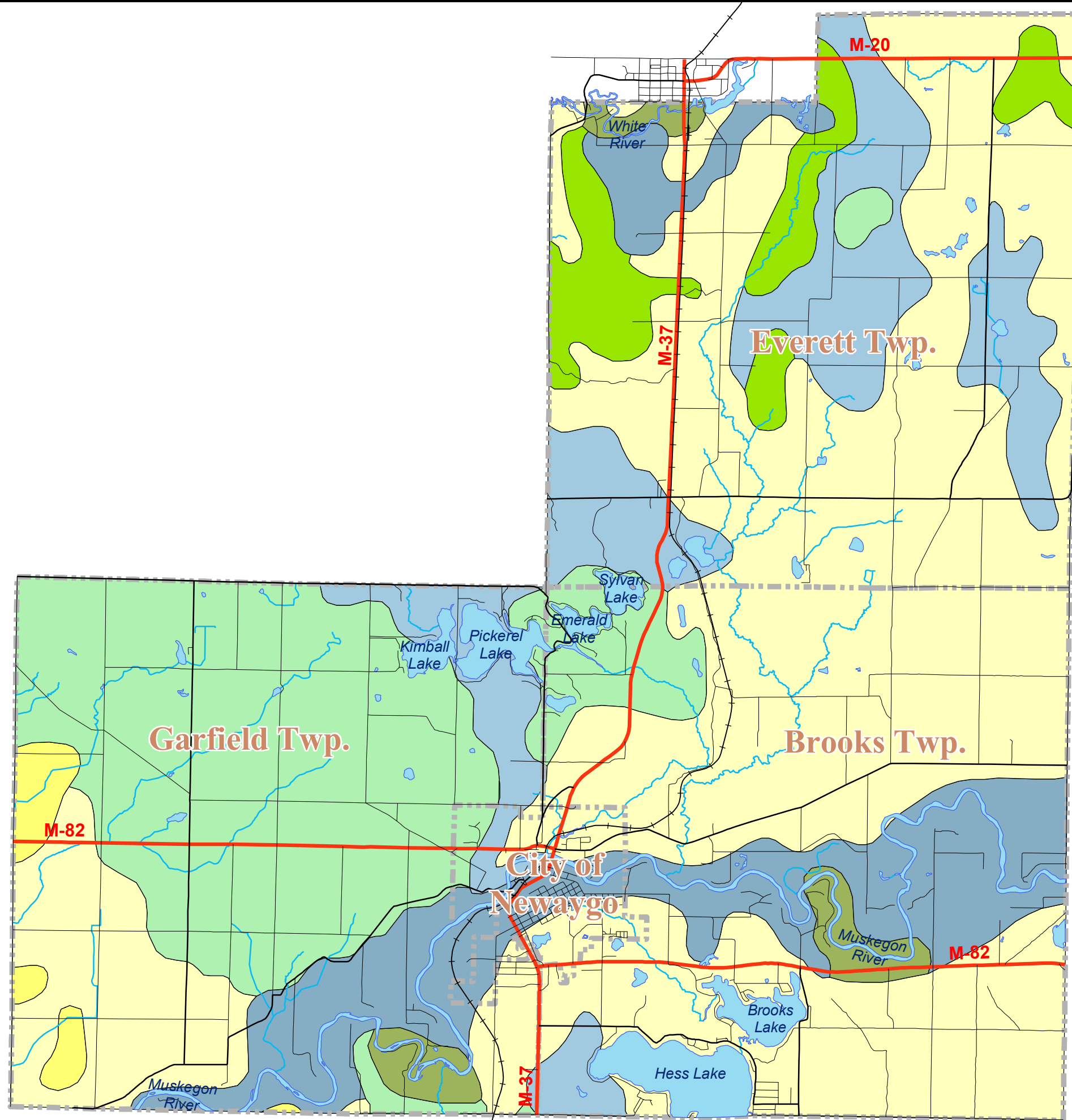


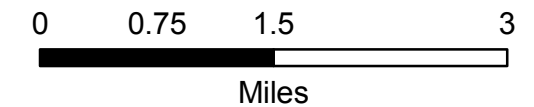
Newaygo Community
Recreation and Natural Resources
Conservation Plan, 2005-2010

General Soil Map

Map 8



- Coloma-Spinks-Metea association
- Cosad-Del Rey-Sickles association
- Glendora-Abscota-Algansee association
- Marlette-Metea-Spinks association
- Pipestone-Covert-Kingsville association
- Plainfield-Grattan-Brems association
- Toogood-Boyer association
- Jurisdictional Boundary
- Highways
- Major Roads
- Minor Roads
- Railroad
- Lakes and Rivers
- Streams



Source:
Soil Survey of Newaygo County, Michigan, United States
Department of Agriculture, Soil Conservation Service
and Forest Service

Michigan Center for Geographic Information,
Department of Information Technology

The data utilized herein was provided by Newaygo County,
Michigan pursuant to license, is copyright protected and
may not be utilized or reproduced without Newaygo
County's permission. No warranty is offered as to the
accuracy of this data. 1997 Newaygo County, Michigan.
All rights reserved

Map designed and produced May 2005 by:

